

Series

TB



**double-shaft
shredders**



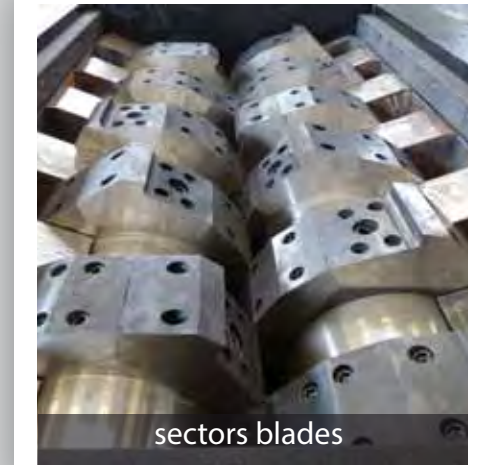
amazing in volume reduction

INNOVATIVE SOLUTIONS

Double-shaft shredders (TB) perfectly adapt to treatments that require volume reduction and grinding with partial output size control. High material flows can be treated when operated without a screen. The exclusive and innovative cutting chamber design allows for quick shaft extraction and replacement complete with blades, drastically reducing maintenance time.



entire blades



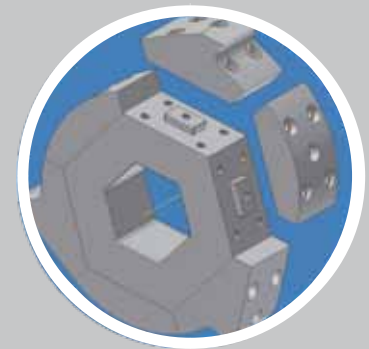
sectors blades



High thick steel frame



Bearings outside the cutting chamber



Blades in hot forged special steel adjustable by thickness and number of teeth

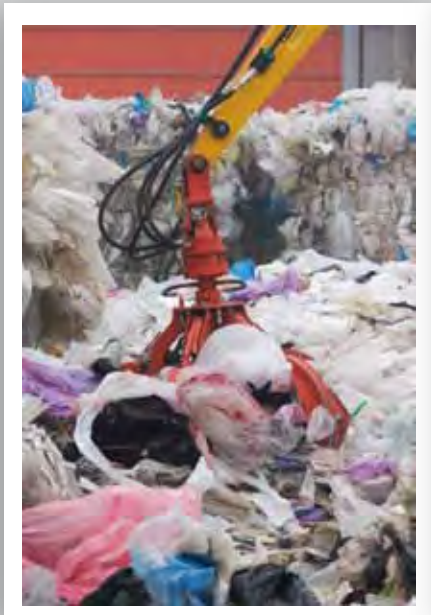


The advantages of Forrec double-shaft shredders TB

- High thick steel frame with minimum number of welding points.
- Each shaft is equipped with its own gearbox and motor to guarantee the machine high performance.
- High torque combined with low rpm to cut harder materials.
- Removable blade carriage shafts without blades removal for faster maintenance.
- Special steel shafts with surface heat hardening to drastically reduce wear.
- Hydraulic transmission with constant power regulation system to obtain high cutting torque at low electrical power.
- Blades in hot forged special steel, for mechanical resistance combined with high hardness.
- Adjustable blades by type, thickness and number of teeth.
- Independent spacers with hexagonal hole not welded to the blades for easy sharpening.
- Bearings outside the cutting chamber to avoid damages due to material leakage.
- Customisable hopper and support structure.
- Built-in modem for fast remote diagnostics.
- Automatic lubrication system controlled by PLC.
- Stop and reverse system for non-shreddable materials controlled by PLC.

Wide range of available options, such as:

- External or built-in ram
- Conveyor belts
- Remote control
- Hydraulic oil heating for winter operations
- Video cameras
- Load photocells
- Misting systems



Automatic lubrication system



Built-in modem for fast diagnostics



Wide range of available rams



Removable blade carriage shafts



Technical specifications

Model		Electric transmission						Hydraulic transmission			
		TB700	TB1000	TB1300	TB1500	TB1800	TB2000	TBH1300	TBH1500	TBH1800	TBH2000
Machine width (*)	mm	900	900	1240	1600	1600	1705	1240	1600	1600	1705
Machine length (*)	mm	2700	3000	3400	5700	5200	4500	3700	4900	6000	4200
Machine height (*)	mm	450	450	600	685	685	780	600	685	685	780
Cutting chamber width	mm	660	660	960	1100	1100	1300	960	1100	1100	1300
Cutting chamber length	mm	710	1020	1260	1460	1760	1960	1260	1460	1760	1960
Entire blades thickness	mm	20	30	30	50	75	75	50	75	75	100
		30	50	50	75	100	100	75	100	100	100
Sectors blades thickness	mm	X	X	X	X	X	X	X	75	75	100
									100	100	100
Weight (*)	ton	2	2,3	6	11	13	15,5	5,5	10	12	14,5
Installed power	kW	2x11	2x11	2x22	2x37	2x37	2x55	2x37	2x37	2x55	2x75
		2x15	2x15	2x30	2x55	2x55			2x55	2x75	2x90
Main control panel controls	Pushbutton panel with lighted signals PLC management of automations, integrations, emergencies, etc. Control instruments 24 V AC power line										

(*) Hopper and support frame excluded. Dimensions customizable.

Main applications and indicative productivity

		Electric transmission						Hydraulic transmission			
		TB700	TB1000	TB1300	TB1500	TB1800	TB2000	TBH1300	TBH1500	TBH1800	TBH2000
Plastic and polymers	ton/h	0,3	1,5	2,5	4	4,5	6	3	5	5,5	7
Wood	ton/h	0,5	2	3	4	5	7	3,5	4,5	5,5	8
Paper and cardboard	ton/h	0,4	1,5	X	X	X	X	3	4	5	6
Electrical wires	ton/h	0,3	1	2	3	4	6	2,5	3,5	4,5	6,5
Tyres (car)	ton/h	X	0,7	X	X	X	X	1,5	6	8	12
Tyres (lorry)	ton/h	X	X	X	X	X	X	X	4,5	5	7
Municipal solid waste	ton/h	X	5	X	X	X	X	10	20	35	60
Industrial waste	ton/h	0,4	1	X	X	X	X	3	4	6	10
Special industrial waste	ton/h	X	X	X	X	X	X	3	4	6	10
Refrigerators	pcs/h	X	X	80	120	130	200	X	X	X	X
Weee	ton/h	X	X	1,5	3	4	6	2	3,5	5	7
<i>Other applications upon request</i>											

Technical alterations reserved.

follow us on



FORREC S.r.l.
 Viale dell'Artigianato, 24
 35010 Santa Giustina in Colle (PD) - Italia

Tel: +39 049 0990015
 Fax: +39 049 0990490
 Email: info@forrec.it
 Web: www.forrec.eu