

# BRICKMAN 300 CARDBOARD

This version of BRICKMAN 300 is designed for effective compaction of large amounts of dry cardboard. The automated solution is time-saving and convenient. Due to a small footprint and low sound emission, BRICKMAN 300 can be placed indoors close to the source of waste.



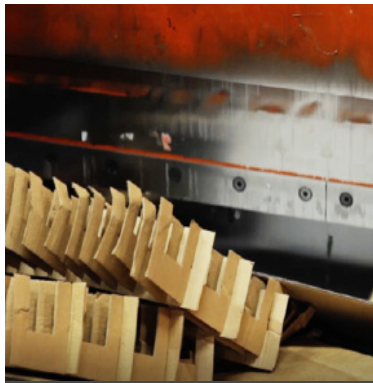
**AUTOMATIC  
SOLUTION**



**CAPACITY  
CARDBOARD**



## ORWAK BENEFITS



### **MORE PRODUCTIVE USE OF TIME**

Less time spent on waste handling, more time for your core activities!

### **MORE SPACE & ORDER**

Our balers rapidly minimize the space the waste takes up, keeping aisles free and tidy.

### **LESS COSTS, MORE VALUE**

More compaction = less waste volume to transport. Fewer transports required results in lower transportation costs and reduced CO<sub>2</sub> emissions. Sorting at source yields a higher quality of waste material for recycling.

## WHY BRICKMAN?

- Convenient fully automated compaction solution
- Impressive volume reduction of up to 20:1
- Placement opportunities indoors

 **ORWAK**  
PART OF **SULO** GROUP

# BRICKMAN 300 CARDBOARD

Turns large volume of material into compact briquettes for recycling

## CONVENIENT AND EFFICIENT

BRICKMAN offers time-saving and comfortable waste handling. The press can be fed while running, there is no lid or door to open when loading the material and the ready briquettes require no binding.

Furthermore, optional photocells can automate the start function. The material infeed and briquette outfeed are easy to integrate in system solutions.

## DESIGNED FOR CARDBOARD COMPACTION

The model is ideal for compaction of dry cardboard and paper. The compaction pressure is up to 500 kg/cm<sup>2</sup>.



Small and compact briquette

## BRICKMAN 300 CARDBOARD IS OPTIMIZED FOR:

### CARDBOARD

- Corrugated cardboard

### CAPACITY

Up to 250 kg/h

## GREAT LOGISTICS

Thanks to BRICKMAN's compact dimensions and low sound emission, it can be placed indoors close to the waste disposal station.

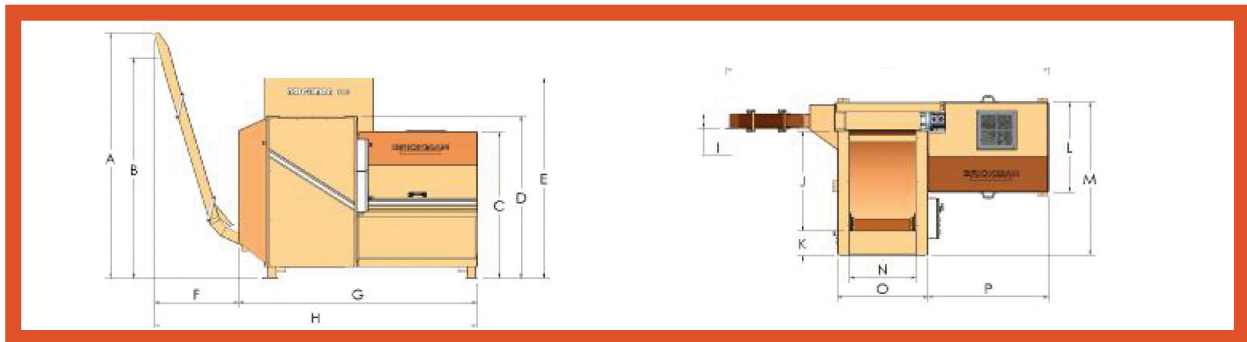
## OPTIONAL ACCESSORIES

BRICKMAN can be ordered with a number of accessories; different chute options, start systems, sound absorption plates as well as heating and cooling devices.

## DIMENSIONS & SPECIFICATIONS

### DIMENSIONS (mm)

A	B	C	D	E	F	G	H	I	J	K	L	M	N	O	P
2270	1950	1360	1500	1880	850	2190	3040	140	950	210	840	1440	600	825	1100



### TECHNICAL SPECIFICATIONS

MACHINE WEIGHT	PRESS FORCE	PRESSURE	HOPPER	BRIQUETTE SIZE	DENSITY*	NOISE LEVEL	PROTECTION CLASS	OPERATING POWER
1600 kg	25 ton 250 kN	Up to 500 kg/cm	0.75 m <sup>3</sup>	80x80x100-300 mm	Up to 600 kg/m <sup>3</sup>	68 db (A)	IP 55	400 V, 3-phase, 50 Hz** Fuse: 25 A (slow) Engine: 7.5 kW, Voltage 24 V

We reserve the right to make changes to specifications without prior notice. \* Density varies with type of material. \*\* Other voltages are available

## ORWAK COMPACTORS AUSTRALIA

250 Hammond Road  
Dandenong, VIC 3175  
Australia

Phone: (03) 8792 9777

E-mail: sales@orwakcompactors.com.au

[ORWAKCOMPACTORS.COM.AU](http://ORWAKCOMPACTORS.COM.AU)

