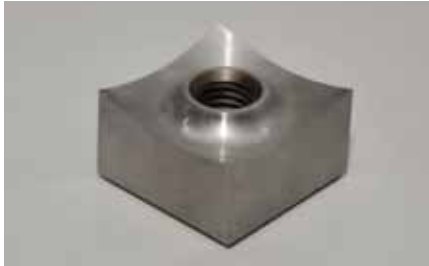


ZIS

Shredder For Voluminous Parts

- 35% more internal volume compared to the ZSS series
- Internal hydraulic pusher (ram)
- Variable speed, faster pusher movement
- Smaller footprint compared to traditional horizontal pusher style shredders
- enclosed cutting chamber to avoid material spillage
- all advantages of the conventional ZSS series



The shredders use concave ground square knives, producing high quality output. The cutters can be turned after a side is worn out.



All ZERMA shredders are equipped with a large diameter flat rotor. The knives are fixed in special knife holders fitted in machined pockets. Optional weld on hard facing is available for abrasive applications.



The internal ram design on the ZIS series allows the cutting chamber volume to be increased while keeping a small footprint. Making the ZIS ideal for shredding of big volume parts.

General Description

The ZIS series shredders are single shaft shredders with a large internal volume. The redesigned hydraulic pusher system creates approx 35% more space in the cutting chamber while increasing the power and speed of the ram itself. The machines are equipped with a 457 mm diameter ZERMA E rotor with widths ranging from 1200mm to 2000 mm. As on the ZSS machines, the rotor is driven via an oversized gearbox. The completely enclosed welded steel housing increases the stability and avoids material spillage. The ZIS incorporates all the traditional advantages of the ZERMA knife and knife holder design as well as standard features such as outboard bearings, hydraulic screen cradle, easy maintainability and advanced controls.

Applications

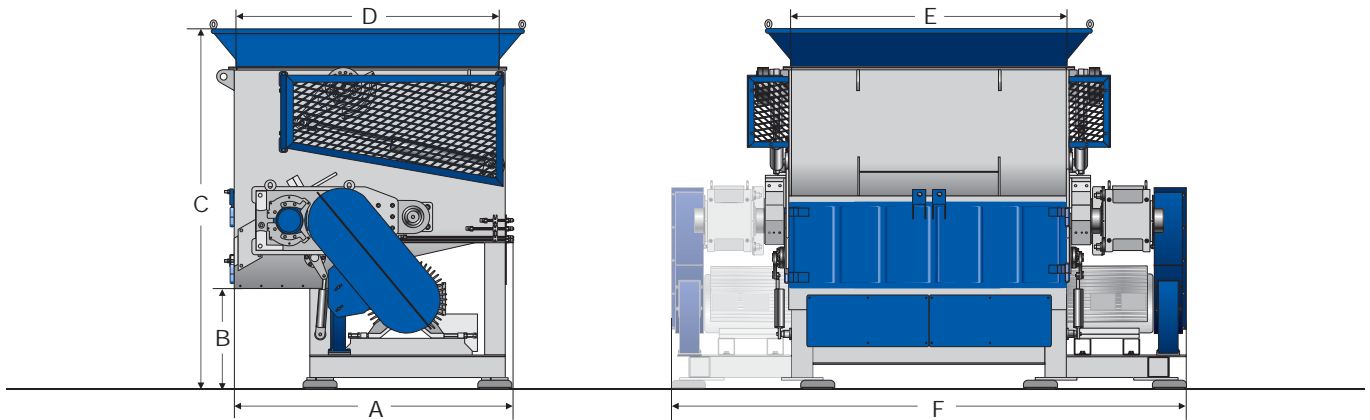
The ZIS shredders have been designed to handle voluminous parts such as IBCs, wheelie bins, pallets, large drums etc but also retain the versatility and flexibility to be used for general recycling in the plastic and wood industry. As with all ZERMA shredders, the ZIS range can be equipped with a wear package for the processing of highly abrasive, filled materials.



The Home of Size Reduction

ZIS

Shredder For Voluminous Parts



Technical Specifications and Dimensions

Model

Rotor diameter (mm)
 Rotor width (mm)
 Rotor speed (rpm)
 Drive capacity (kW)
 Rotor knives (pcs)
 Stator blades (rows)
 Ram feeder drive (kW)
 Screen size (mm)
 Cutting chamber volume (m³)
 Effective working area (mm)
 Weight approx (kg)

1200

457
 1130
 74
 55
 54/81
 1
 5.6
 >40
 2.15
 1400 x 1010
 5000

1500

457
 1410
 74
 75
 68/102
 1
 5.6
 >40
 2.7
 1400 x 1290
 6400

2000

457
 1970
 74
 2 x 55
 96/144
 1
 5.6
 >40
 3.75
 1400 x 1850
 8800

A (mm)

2070

2070

2070

B (mm)

725

725

725

C (mm)

2600

2600

2600

D (mm)

1880

1880

1880

E (mm)

1140

1420

1980

F (mm)

2320

2635

3710

ZERMA MACHINERY & RECYCLING TECHNOLOGY CO. LTD.

5 Xinjie Rd Xinqiao Township Ind. Park

Songjiang · Shanghai · China

Phone : +86 21 57645573 · info@zerma.com

Technical modifications reserved / ver1.7 - 08.2015 / en

zerma.com

